

# *Estuary Exchange*

*December 2025*



**ST. ANDREW & ST. JOSEPH BAYS**  
**ESTUARY PROGRAM**  
*at* FSU PANAMA CITY

*Together for the Bays*



## *2025 Recap*

---



As quickly as it arrived, 2025 is already coming to a close!

2025 was a year of progress! We've completed grants, launched new projects, completed field research, created technical summaries, and expanded our community outreach. Here's a look back at some of the work we've accomplished together with our partners and community. We're excited to carry this momentum into 2026!

Click the button below to view the full 2025 Impact Report.

[2025 Impact Report](#)

## *Living Shoreline Monitoring Yearly Wrap Up*

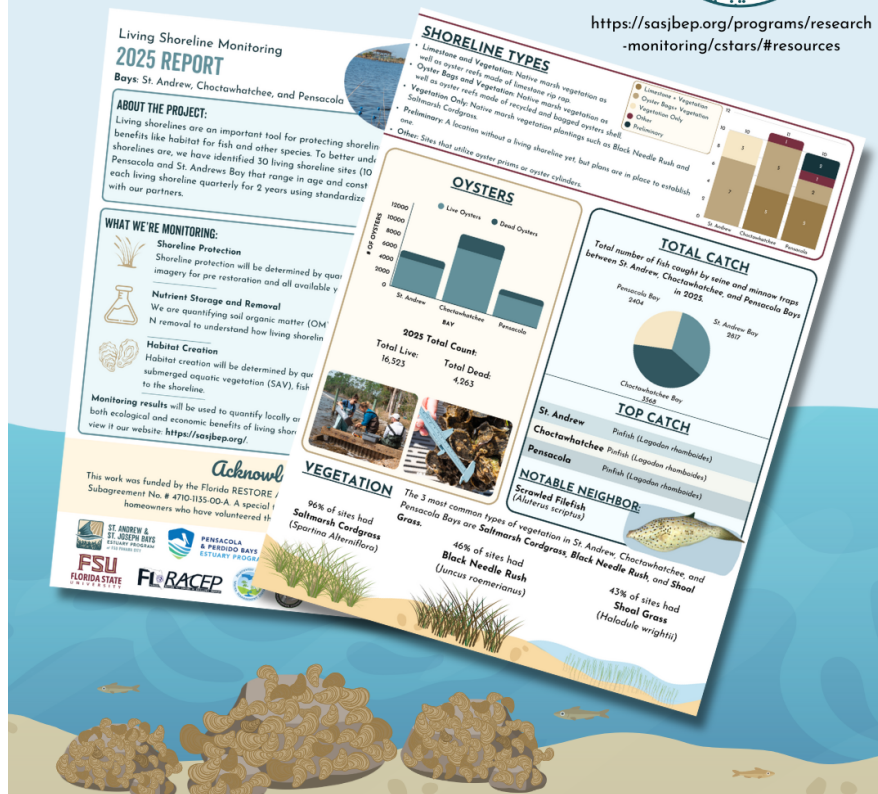
---

# LIVING SHORELINES MONITORING

## 2025 Overview



<https://sasjbe.org/programs/research-monitoring/cstars/#resources>



Our team, together with Pensacola and Perdido Bays Estuary Program, Choctawhatchee Basin Alliance, and St. Andrew Bay Watch, has completed 2 years of Living Shoreline Monitoring. Through the Collaborative Science to Assess Restoration Success (C-STARS) project, this data will show how well Living Shorelines work over time. Check out the report to see what we've found at monitored sites in St. Andrew, Pensacola, and Choctawhatchee bays in 2025. Past information can be found on our website [here](#).

[Read the Report](#)

St. Andrew and St. Joseph Bays Awarded Nearly \$750,000 EPA Grant to Launch "Bay Guardians" Water Quality Initiative

## Science Corner

---



*Flock of Dunlins, Blake Matheson*

### Winter Visitors: Welcoming Migratory Birds to Our Bays

Each winter, our estuary becomes a seasonal home for many migratory birds. Throughout the bays, wetlands, and forests, you might spot seasonal visitors like Red-breasted Mergansers, common loons, American Avocets, and flocks of shorebirds like Dunlins and Western Sandpipers. The wide range of habitats within our watershed gives these visitors what they need to sustain the long winter: insects, vegetation, and fish to eat, and protective roosting areas safe from the elements.

We can support visiting birds by giving them plenty of space, keeping dogs leashed in wildlife areas, and picking up trash. Take your support a step further by joining the Audubon Christmas Bird Count from December 14-January 5 and help scientists track winter bird populations. This season, grab your binoculars, get outside, and keep an eye out for some of our unique seasonal visitors.

Cornell Lab of Ornithology. (n.d.). *All About Birds*.

<https://www.allaboutbirds.org/news/>

National Audubon Society. *Join the Christmas Bird Count*.

<https://www.audubon.org/community-science/christmas-bird-count/join-christmas-bird-count>

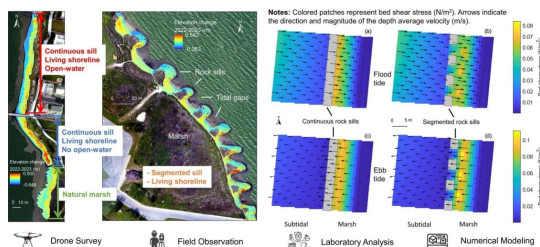


## Recent Relevant Research

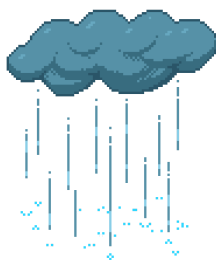
*Click the images to view articles.*



Birds in the 'Burbs': Do Migratory Birds Prefer Urban Forest Fragments or Residential Yards?



Impacts of rock sill design on sediment dynamics and marsh stability in living shorelines.



Rain is on its way!

Help us identify areas in need of stormwater improvements by filling out the community flood survey below.

[Community Flood Survey.](#)

## Find the Estuary Program



*December 13, 2025*

## Boat Parade of Lights

From 5:00-7:30 pm, enjoy the Boat Parade of Lights and Holiday Village! The boat parade will feature a dazzling display of Christmas lights and decorations, transforming St. Andrews Bay into a magical winter wonderland.

When: Saturday, December 13th 5:00 - 7:30pm  
CT

Where: Panama City Marina

## Community Events

Click the images to explore upcoming events throughout the St. Andrew Bay Watershed!



*Events in Panama City*



*Events in Panama City Beach*



*Events in South Walton County*



*Events in Gulf County*



*Events in Mexico Beach*



*Gulf County Chamber of  
Commerce - Events*

# Upcoming Meetings

---

## Policy Board Meeting



December 17th, 2025

1:00pm-3:00pm CDT; Room A301 Deans Conference Room; FSU PC Holley Building  
<https://fsu.zoom.us/j/93469785995>

Join Zoom

## Management Council Meeting



December 5th, 2025

10am-12pm CDT; Room A301, Deans Conference Room; FSU PC Holley Building Join Via  
Zoom: <https://fsu.zoom.us/j/91728868009> Meeting ID: [917 2886 8009](https://fsu.zoom.us/j/91728868009)

Join Zoom

## Science and Technical Committee Meeting



December 18th, 2025

1:00 - 2:00 PM CDT; Admin Services Conference Room 108

Join Zoom

## Stormwater Working Group



Date TBD

10am-11am CDT; Virtual only.

## Community Action Committee Meeting



Date TBD

Next meeting date to be determined.

## Teen Outreach Committee Meeting

+

January meeting date TBD

10 am - 11:00 am CT

Join the TOC

To access all past meeting materials, notes, and presentations, visit our Library of Resources page on our website. Link directly by clicking below!

Library of Resources

Florida State University Panama City Campus Map

## Volunteer Opportunities

A poster for the SASJ Bays Volunteer Network. The background is a photograph of three people (two women and one man) standing in shallow water, possibly a bay or estuary, with trees in the background. The text is overlaid on the left side. At the top left, it says 'SASJ BAYS VOLUNTEER NETWORK'. Below that, in large bold letters, is 'JOIN THE VOLUNTEER NETWORK!'. Underneath that, it says 'Interested in getting involved in protection and restoration efforts within the St. Andrew Bay Watershed?'. Then, in a smaller font, 'Join Our Email List!'. Below that, it says 'SASJ Bays Volunteer Network connects organizations across the watershed with citizens looking for an opportunity to get involved.' Then, there are two bullet points: '• Organizations: Connect with volunteers for your events' and '• Volunteers: Learn about volunteer opportunities from our partners all across the watershed'. At the bottom left, there is a 'JOIN NOW' button with a right arrow icon. To the right of the button is the URL 'HTTPS://LISTS.FSU.EDU/MAILMAN/LISTINFO/VOLUNTEER-SASJBEP'. At the bottom right, there is a circular inset map of the St. Andrew Bay Watershed, with the text 'St. Andrew Bay Watershed' written around it. At the very bottom, it says 'St. Andrew and St. Joseph Bays Estuary Program'.



The SASJ Bays Volunteer Network connects organizations with passionate members of the community that are interested getting involved. Join the email list to receive updates on upcoming volunteer opportunities from across the partners across the watershed and share organized events with others!

Join the Email List

## *Job Opportunities*

University of Northwest Florida

- [Assistant Professor of Biology, Coastal Ecologist](#)

Choctawhatchee Basin Alliance

- [Ecology Technician](#)
- [Education and Outreach Specialist](#)

Pensacola and Perdido Bays Estuary Program

- [Operations Manager](#)

**Contact us at** [estuaryprogram@pc.fsu.edu](mailto:estuaryprogram@pc.fsu.edu)



St. Andrew and St. Joseph Bays Estuary  
Program

4750 Collegiate Drive  
Panama City, FL 32405



[estuaryprogram@pc.fsu.edu](mailto:estuaryprogram@pc.fsu.edu)

You received this email because you signed up online  
or at an outreach event. No longer wish to receive  
these emails?

[Unsubscribe](#)

Donate